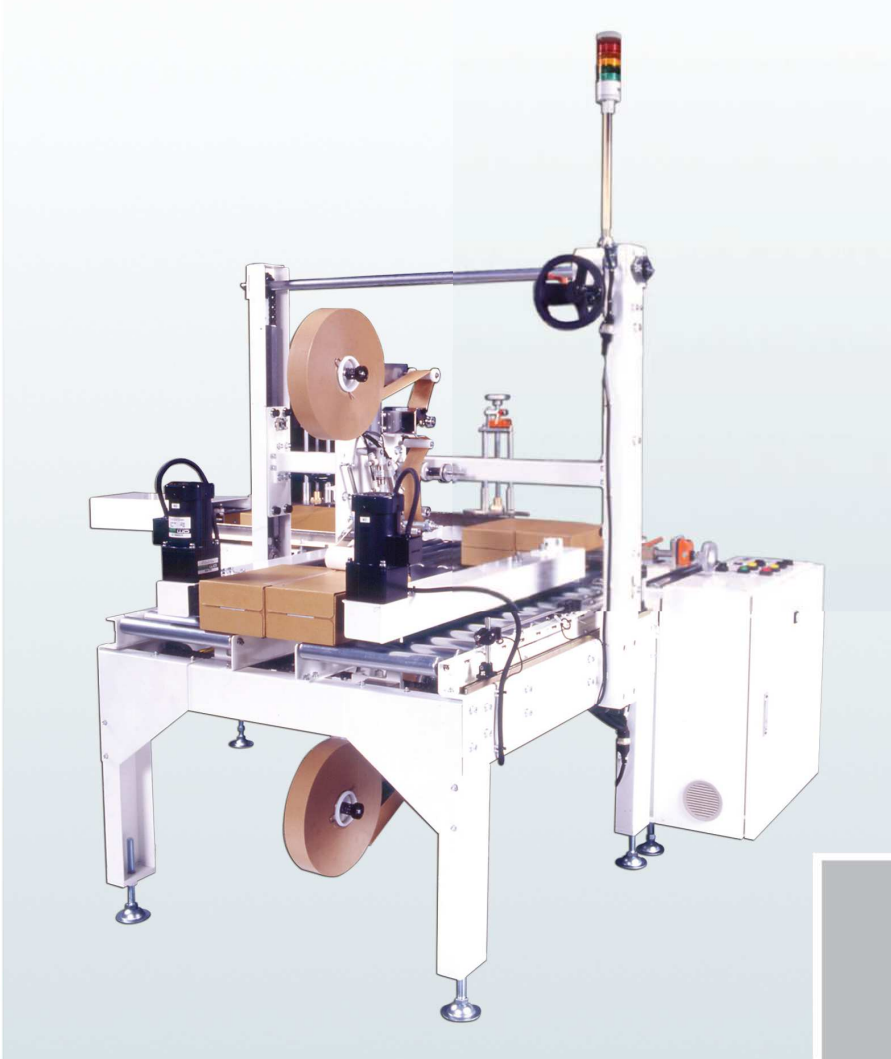


JPS-Series

Taping units are equipped on both top and bottom side for straight sealing. 2 packages are combined into 1 package. Compact and simple structure enhance productivity.

JPS-101

Tape sealer corresponding to needs for packing for new generation



Adjustable tape length

The length of tape is adjustable.

Compact design

Compact design makes it suitable to a variety of working environment.

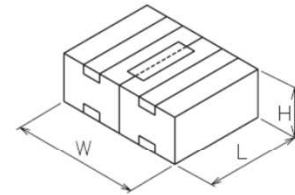
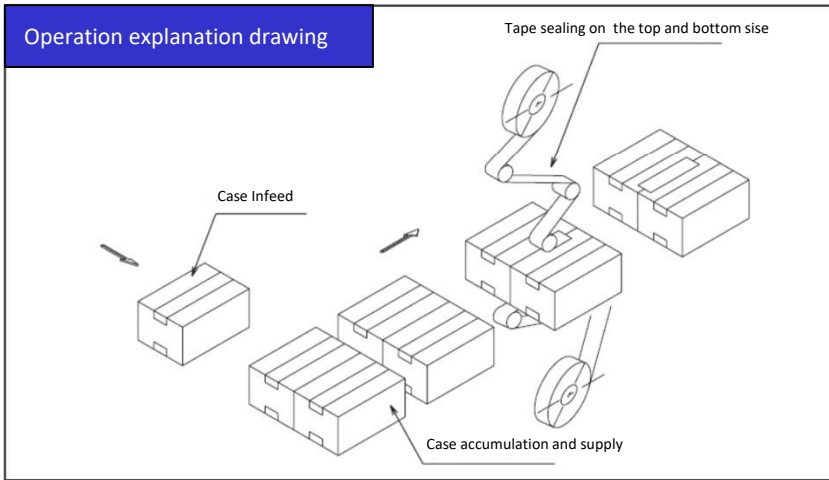
Simple structure

Simple structure improves maintainability.



JPS-101

2 packages combined into one package helps save transportation cost.



JPS-101			
	L	W	H
min	180	260	80
max	350	400	240

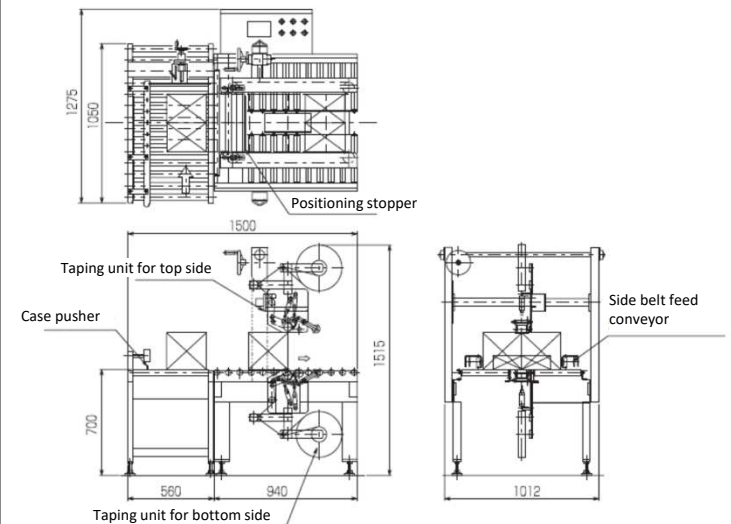
Specification

Model	JPS-101
Capacity	12 packs/min
Electric Power	3 Phase 200V 400W
Compressed Air	0.49MPa 80Nℓ/min
Applicable case	Sealed carton case
Carton transport part	Side belt conveyor
Sealing method	Kraft or OPP tape
Detector	Tape shortage detection Tape remaining alarm and others
Operation panel	Touch panel
Size change	Steering wheel adjustment (with digital indicator)
Machine Size	L=1500mm W=1275mm H=1515mm
Pass Line	700 mm
Machine Weight	Approx. 250kg

Options

- Gummed tape with water application
- Various stamping devices
- Hot melt sealing
- Special carton size
- Full cover version
- Others

Machine dimensional drawing side



1-19-7, Yokoe, Ibaraki-shi, Osaka, Japan 567-0865

TEL: +81-72-637-3420 FAX: +81-72-637-3464
E-mail: info@yeg.co.jp URL: <http://www.yuhara-engineering.com>

Business Item ● Cartoning Machine(Horizontal · Vertical) ● Packing Machine ● Carton caser ● Robot caser ● Wrap-around caser
● Case former · Case sealer ● Palletizer ● Auto feeder ● Cost-saving · factory automation facility